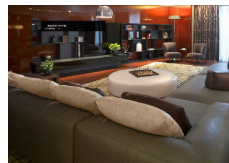
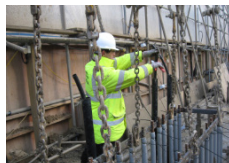


## Bvlgari Hotel & Resort Knightsbridge, London, UK



### Key Facts

- Loops in Energy Piles and Diaphragm Wall
- Completed 2013
- 200kW Heating & Cooling



The new Bvlgari Hotel and Resort in London is set in the heart of Knightsbridge, perhaps the city's most prestigious neighbourhood. Above ground the Hotel displays innovative artistry and a lavish use of precious marble and silver blend harmoniously, exuding an understated elegance.

Below ground, GI Energy installed geothermal loops into piles and diaphragm wall, a first for this type of Energy Pile System. Excellent design is at the heart of the Hotel's values. GI Energy developed technical solutions to literally be in the very foundations of the Hotel's state of the art technology and sustainability features.

providing sustainable energy

[www.gienergy.net](http://www.gienergy.net)